

**The Westmoreland Museum of American Art
Collections Committee Report
October 5, 2020**

PROPOSED GIFTS:

William Hoffman Jr.

Latrobe Steel (Alco; Standard Steel), 1963
Oil on linen, 25 x 30 inches

Note: Painted on site at Latrobe Steel Alcoa,
Latrobe, PA
Restored 2007, Michael Mosorjak

Gift of William Hoffman, Jr.



Samuel Rosenberg (1896-1972)

Near Herron Hill, 1934
Oil on canvas, 32 x 38 inches

Gift of the Debra Light in memory of her parents
Harvey and Lenore Light



Soap Hollow Seven-Drawer Chest, 1859

Stenciled on front: Manufactured by Peter K. Thomas;
Stenciled on side: F.T. 1859 MF BY CCB (Christian
C. Blough)
Painted and stenciled pine and tulip poplar; glass
drawer pulls, inlaid escutcheons

Gift of the Estate of Charles R. Muller



Aaron Bohrod (1907-1992)
West-Bluff Greenhouse, 1935
Oil on panel, 19 x 24 inches uf

Gift of Dr. Michael L. and Lilli Nieland



Aaron Bohrod (1907-1992)
Still Life with Chinese Puzzle, 1972
Oil on panel, 12 ¼ x 16 ¼ inches uf

Gift of Dr. Michael L. and Lilli Nieland



Arthur Clifton Goodwin (1864-1929)
Busy Winter Day, Tremont and Park Streets, n.d.
Oil on canvas, 34 x 40 inches uf

Gift of Dr. Michael L. and Lilli Nieland



John Koch (1909-1978)
Two Models and the Artist, 1972
Oil on canvas, 21 x 24 inches

Gift of Dr. Michael L. and Lilli Nieland

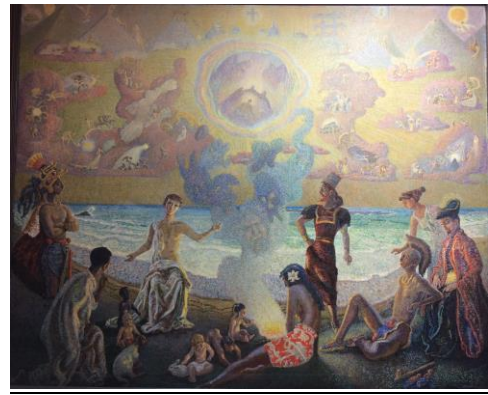


Nicholas Petkovich (1893-1952)

Legend of the Races (Races of Humanity Listen to the Genius of Wisdom Explaining the Legends of all Peoples)

Oil on canvas, 64.5 x 79 3/8 inches

Gift of Dr. Michael L. and Lilli Nieland



LaVon Van Williams, Jr.

No More Booze and Fried Food, 2011

Two-sided bas-relief, poplar, oil paint, hammered copper, 19.25 x 37.25 x 2 inches

Gift of Dr. Michael L. and Lilli Nieland



Helen Farr (Sloan) (1911-2005)

Aphrodisiac - Angna Enters, not dated

Lithograph on paper, 12 1/4 x 8 3/4 inches sight;
20 x 17 inches f.

Annotated in pencil lower left '25 proofs'

Titled in pencil lower center

Signed in pencil lower right Helen Farr

Gift of Judy and Kevin O'Toole in memory of Bruce Wolf

Angna Enters was a fellow student with Farr at the Art Students League where John Sloan was a teacher. Farr later married Sloan in 1944.



PURCHASES:

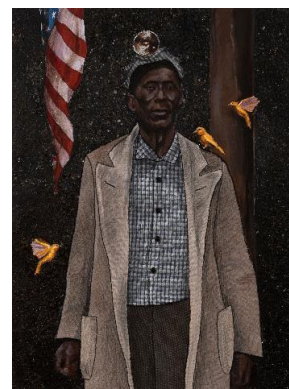
Stephen Towns

The Pioneer, 2020

Oil, acrylic, fabric, buttons, Bristol paper, mica flakes, graphite, glitter, charcoal on panel, 40 x 30 inches

\$22,000

Source: DeBuck Gallery, New York, NY



Doris Lee (1905-1983)

Afternoon Train, 1945

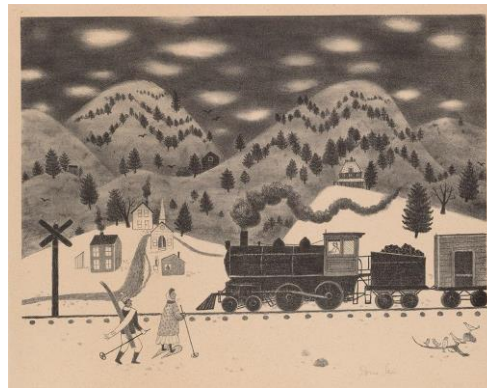
Lithograph on paper, 9 ¼ x 11 ¾ inches (image);
11 1/16 x 13 ¾ inches (sheet)

Signed lower right

Published by Associated American Artists, New York,
AAA #988, edition 250

\$450.00

Source: William McWillie Chambers III, Catskill, NY



Sharif Bey

Red Birds Skull, 2020

Earthenware, approximately 40 inches diameter

\$35,000 less 20% discount - \$28,000

Source: Concept Art Gallery, Pittsburgh and the Artist



SALES

No Proposed Sales

PROPOSED DEACCESSIONS:

No Proposed Deaccessions

LOAN REQUESTS:

Roger Anliker (1924-2013)

In a Serpent's Eye, 1962-63

Gouache on paper, 22 x 29 ½ inches

Gift of Mr. and Mrs. James H. Beal, 1979.116

Roger Anliker (1924-2013)

Moths and Violets, c. 1957-62

Gouache on paper, 22 x 29 ¾ inches

Gift of the William A. Coulter Fund, 1963.51

REQUESTED BY:

Kirsten Jensen, Independent Scholar and Guest Curator*
Community Arts Center, Wallingford, PA

Roger Anliker Retrospective

September 12 – October 9, 2020 [extended to November 13, 2020]

*Independent Curator, previously Chief Curator at the Michener Art Museum in Doylestown



No Image for *Moths and Violets*

APPROVED LOANS:

William Merritt Chase (1849-1916)

Lady in Pink, c. 1892

Oil on canvas, 24 x 20 inches

Gift in Memor yof G. Albert Shoemaker by his wife, Mercedes, 1995.23



Edward Willis Redfield (1869-1965)

Riverside Farm, 1930

Oil on canvas, 38 ¾ x 50 5/8 inches

Gift in Memory of G. Albert Shoemaker by his wife, Mercedes, 2015.100



John Singer Sargent (1856-1925)

Base of a Venetian Palace, c. 1904-1909

Watercolor on paper, 23 x 18 inches

Anonymous Gift, 1978.14



James Abbott McNeill Whistler (1834-1903)

Canal, San Canciano, Venice, c. 1880

Pastel on paper, 11 ¼ x 6 ½ inches

Gift of the William A. Coulter Fund, 1963.49

REQUESTED BY:

Canton Museum of Art

1001 Market Avenue North

Canton, OH 44702

The Age of Impressionism: American Masters

November 27, 2020 – March 8, 2021

Artist Unknown

The Washington Family

Engraving after a painting by J. Paul Jr.

J. G. Miller, Engraver

The Battle at Bunker's Hill, Near Boston, 1775


Engraving after a painting by John Trumbull

ON LOAN TO:

Pittsburgh History and Landmarks Foundation

450 The Landmarks Building, 1 Station Square, Pittsburgh, PA 15219

NO IMAGES AVAILABLE

<p>Carleton Wiggins (1848 – 1932) <i>Winter Sunset</i>, 1872 Oil on canvas, 13 x 25 inches Gift of Herman Williams, 1962.34</p> <p>Robert Qualters (b. 1934) <i>Greensburg, PA</i>, 1971 Oil and acrylic on canvas, 72 x 67 inches Gift of the Artist, 1971.32</p> <p>ON LOAN TO: University of Pittsburgh-Greensburg (President’s Office) 150 Finoli Drive Greensburg, PA 15601</p>	 <p>NO IMAGE AVAILABLE</p>
--	--

EXTENDED LOANS TO THE WESTMORELAND:

<p>Gerrit Albertus Beneker (1882-1934) <i>Men Are Square</i>, 1919 Oil on canvas, 30 x 19 inches</p> <p>ON LOAN FROM: The LaRoche-Knight Family, c/o Louanne LaRoche</p>	
--	--

<p>William Gropper (1897-1977) <i>Joe Magarac</i>, 1947 Oil on canvas, 54 x 44 inches</p> <p>ON LOAN FROM: University Art Gallery, University of Pittsburgh</p>	
---	---